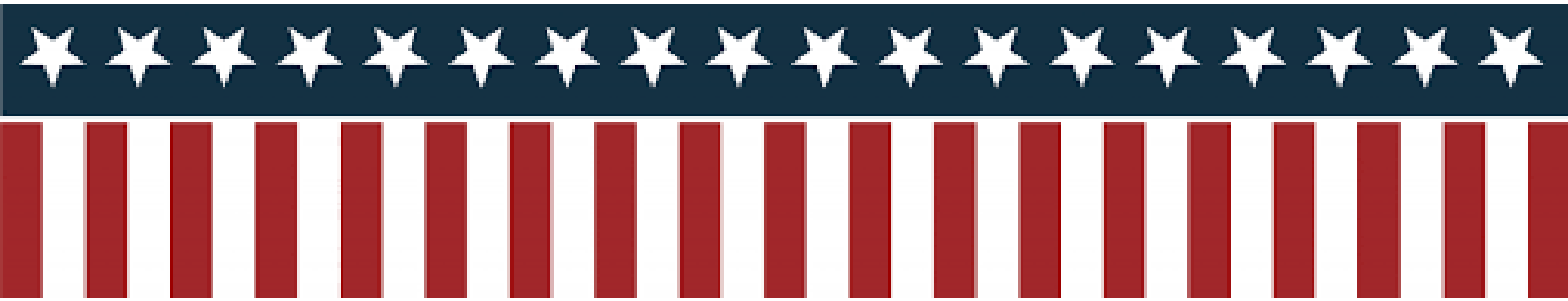


Morgan Stanley



# 2024 Election: Stats & Facts

August 9, 2024

Morgan Stanley Government Relations

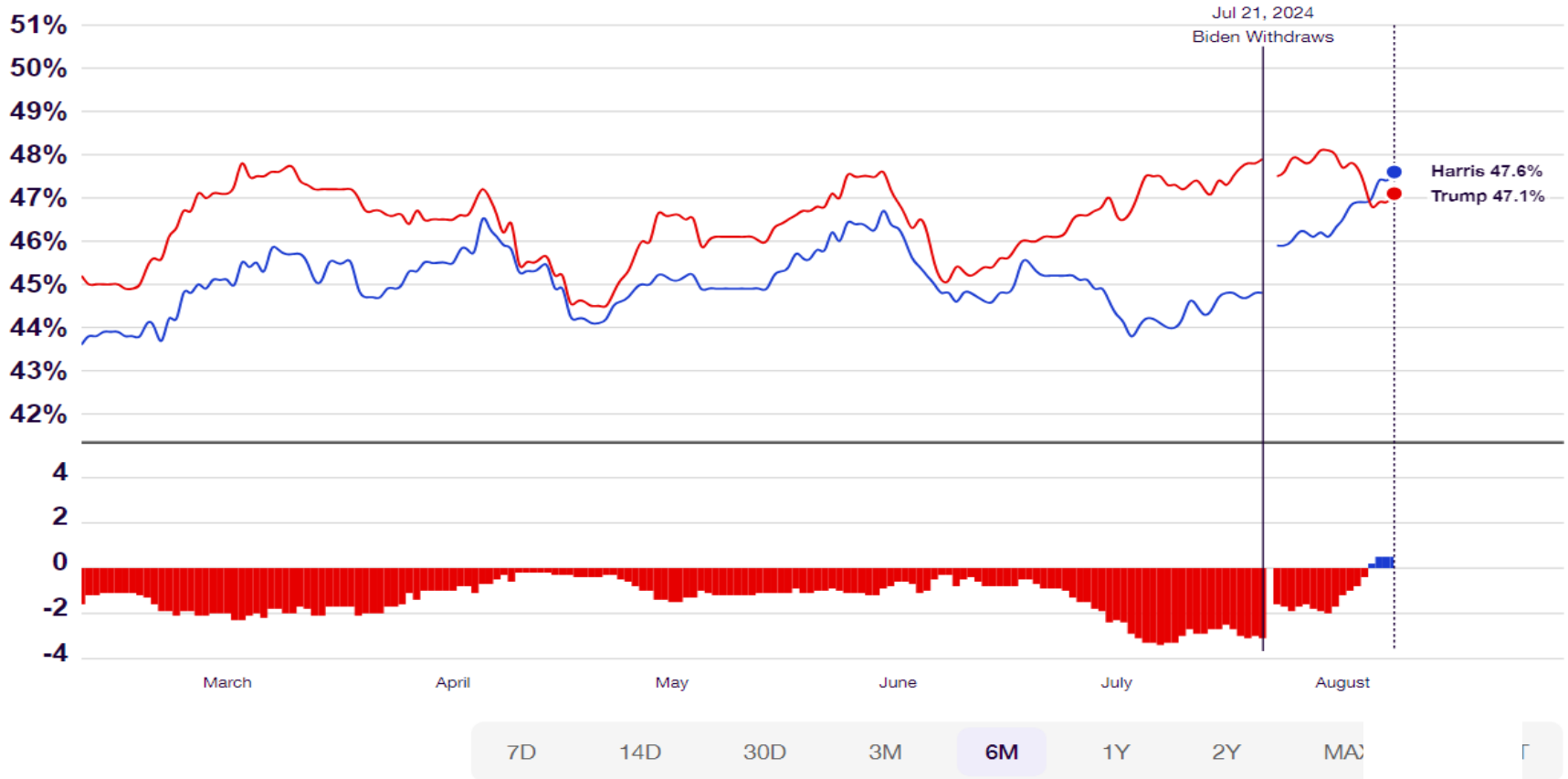
# 2024 General Election Polling – Harris vs. Trump

Includes 13 polls, covering 7/22-8/7

## Trump vs. Harris

(Trump vs. Biden Before July 21, 2024)

47.6 Harris +0.5 47.1 Trump



# Top Battleground States

Arizona, Georgia, Michigan, Nevada, North Carolina, Pennsylvania and Wisconsin

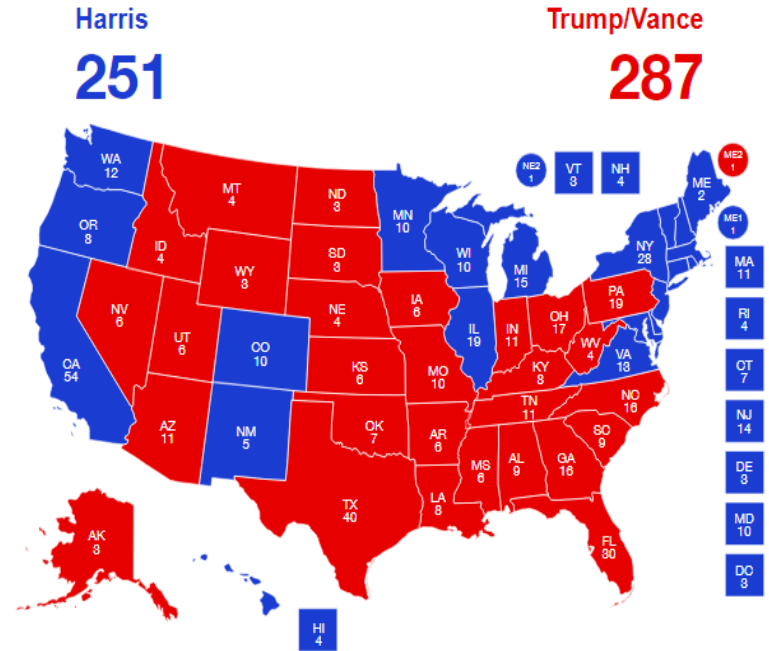
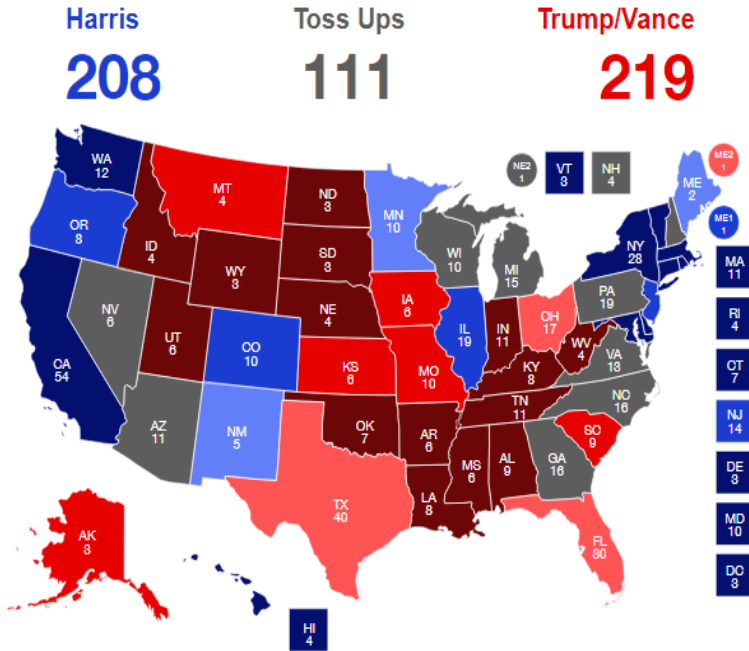


RCP AVERAGE	DATE	TRUMP (R)	HARRIS (D)	SPREAD
<b>Top Battlegrounds</b>	<b>8/8</b>	<b>47.8</b>	<b>46.4</b>	<b>Trump +1.4</b>
<a href="#">Arizona</a>	August 8th	48.3	45.5	<b>Trump +2.8</b>
<a href="#">Nevada</a>	August 8th	47.5	43.5	<b>Trump +4.0</b>
<a href="#">Wisconsin</a>	August 8th	48.3	48.8	<b>Harris +0.5</b>
<a href="#">Michigan</a>	August 8th	46.3	48.3	<b>Harris +2.0</b>
<a href="#">Pennsylvania</a>	August 8th	48.4	46.6	<b>Trump +1.8</b>
<a href="#">North Carolina</a>	August 8th	48.0	45.0	<b>Trump +3.0</b>
<a href="#">Georgia</a>	August 8th	47.8	47.0	<b>Trump +0.8</b>

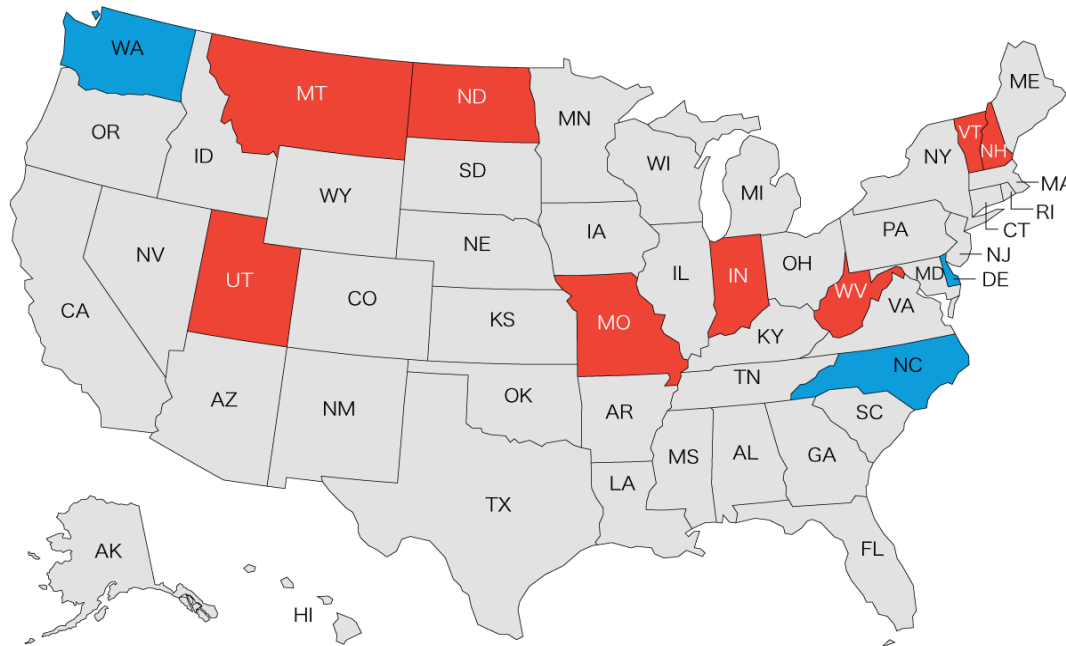
# Electoral College Map

2024 RCP Electoral College Map

2024 Electoral College: No Toss-Up States



# 11 States Holding Governors Races, Three Seen as Competitive



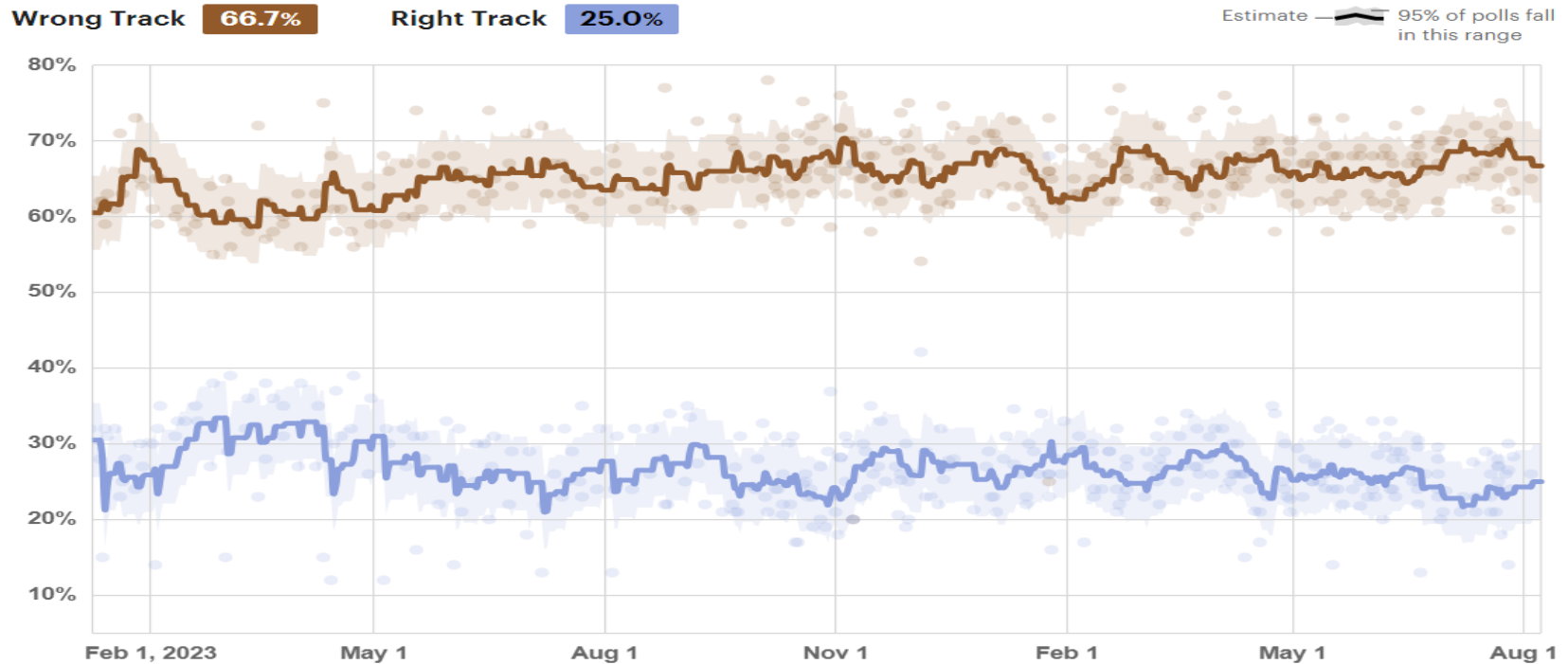
## Closest Governor Races

- ▶ **New Hampshire – Toss-up**
  - ▶ Chris Sununu (R) retiring
- ▶ **North Carolina – Toss-up**
  - ▶ Roy Cooper (D) retiring
  - ▶ State AG Josh Stein (D) vs. Lt. Gov. Mark Robinson (R)
- ▶ **Washington – Leans Democratic**
  - ▶ Jay Inslee (D) retiring

# Right Track/Wrong Track Polls

Wrong Track has a 41.7% lead based on 349 polls

**A bit of background...** The Right/Wrong Track polling data captures the American public's sentiment about the country's current trajectory, offering insights into the collective mood and potential desire for political change or stability. This sentiment is critical in shaping electoral campaigns and political messaging, as candidates and parties seek to align with or address the public's concerns.



## High-Profile Ballot Measures Could Affect Turnout

### Abortion

At least six states will have ballot measures on abortion, including Nevada with a toss-up Senate race

### Minimum Wage

California considers \$18 minimum wage; Alaska weighs \$15 minimum wage plus sick leave; Arizona and Massachusetts could modify rules for tipped workers

### Cannabis/Psychedelics

Florida, South Dakota, and other states have cannabis-related initiatives; Massachusetts considers legalizing possession of one gram of DMT, psilocybin, psilocin

### Immigration

Arizona could vote on whether local law enforcement should be able to arrest migrants; opponents have been suing to keep it off the ballot

### Ranked-Choice Voting

Several states plan to consider adopting ranked-choice voting as Alaska considers scrapping its policy

### Same-Sex Marriage

California, Colorado, and Hawaii have measures to add same-sex marriage protections to constitution

# Survey of Aging in America

A look at Americans' changing attitudes, behaviors, and trends related to growing older

## Few Among U.S. Adults Say Government Prioritizes Issues Affecting Older Americans

How much do you think the U.S. government currently prioritizes issues affecting older Americans?

% A great deal
  % Quite a bit
  % Not too much
  % Not at all



## Majority of U.S. Adults More Likely to Support a Candidate for Public Office if Candidate Prioritizes Issues Affecting Older Americans

How much more or less likely would you be to support a candidate for public office because he or she made issues affecting older Americans a top priority?

	Total	18-29	30-39	40-49	50-64	65+
	%	%	%	%	%	%
<b>Much + Somewhat more likely</b>	<b>57</b>	<b>40</b>	<b>38</b>	<b>54</b>	<b>67</b>	<b>77</b>
Much more likely	20	9	10	10	28	34
Somewhat more likely	37	31	28	44	39	43
Neither more nor less likely	36	46	52	41	29	21
Somewhat less likely	3	8	5	2	2	0
Much less likely	3	4	4	2	2	1



# Aging in America

A look at Americans' changing attitudes, behaviors, and trends related to growing older

## Concerns Over Solvency for Medicare and Social Security Worsen

How worried are you that Medicare/Social Security will not be available when you become eligible to receive it  
 – Extremely worried, worried, not very worried or not at all worried?

% Extremely worried or worried

